
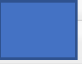


1. Create a virtual device that will look like this:

<input type="checkbox"/>	1505	Root	Geofency		Geofency Maison			
<input type="checkbox"/>	1506	 Inside	Geofency		Matthieu	Today 12:24:57 AM	Outside	Inside



Edit Status Text for device Matthieu

Value	Status	Row	Column	Column Span	Status-Control	
0	Outside Control Use: Not Specified	1	1	0	both control status	Delete
1	Inside Control Use: Not Specified	1	3	0	both control status	Delete

Add New Status Text

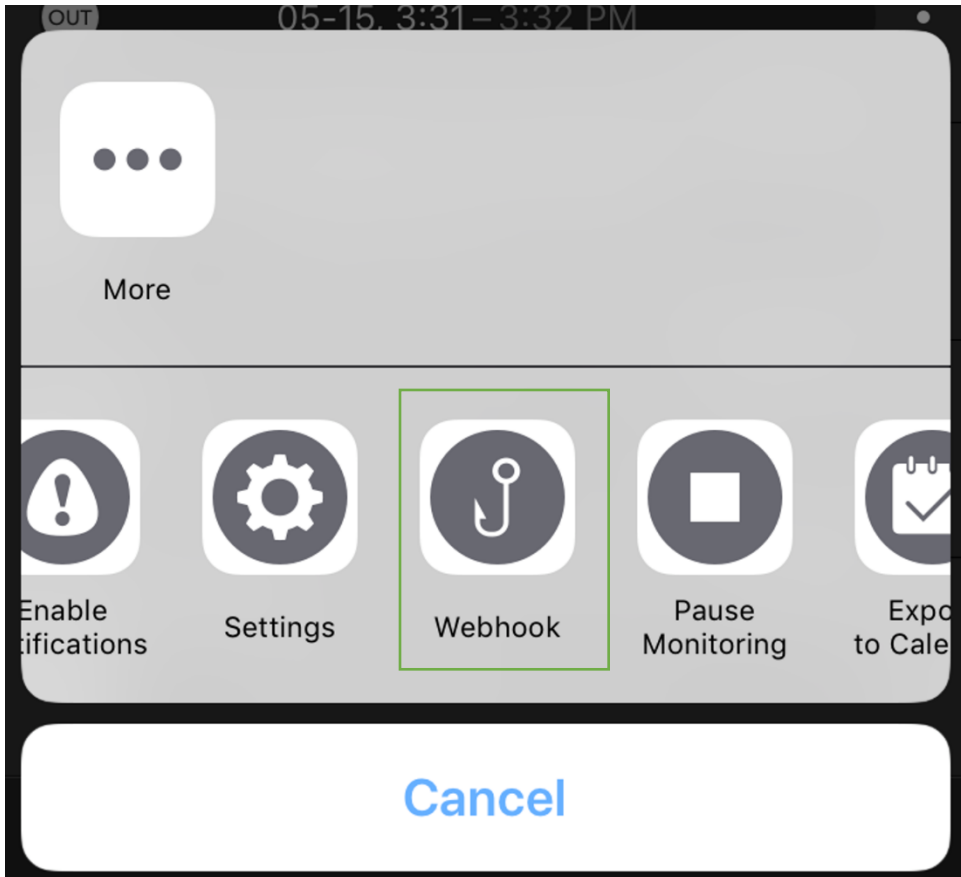
[Add New Single Value](#) [Add New Range Value](#)

Edit Status Graphic for device Matthieu

Value	Graphic	Graphic Path	
0		images/HomeSeer/status/away.png	Edit Delete
1		images/HomeSeer/status/useropening.png	Edit Delete

[Add New Single Graphic](#) [Add New Range Graphic](#)

2. Go into Geofency app. Select a place. Click on the tree vertical dot on the right. Then Click on Webhook.



3. In HTTP METHOD select the option "GET"
4. Click on Event ---- URL Settings
5. Enter Nothing in "Account"

The screenshot displays a mobile application interface for configuring a Webhook. The title "Webhook" is at the top. Below it is a section titled "HTTP CONFIGURATION" containing three settings: "Event → URL Settings" (set to "On"), "HTTP Method" (set to "GET"), and "Account" (set to an empty field). Below this is a "TEST CONNECTION ENTRY" section with a blue "Enter" button. At the bottom is a "TEST CONNECTION EXIT" section with a blue "Exit" button.

Webhook	
HTTP CONFIGURATION	
Event → URL Settings	On >
HTTP Method	GET >
Account	>
TEST CONNECTION ENTRY	
Enter	
TEST CONNECTION EXIT	
Exit	

6. In url field "notify on ENTRY" enter this :
`https://myhs.homeseer.com/JSON?user=YOUR_MYHS_username
&pass=MYHS_PASSWORD&value=1&request=controldevicebyvalue&ref=xxx`

7. In url field "notify on EXIT" enter this:
`https://myhs.homeseer.com/JSON?user=YOUR_MYHS_username
&pass=MYHS_PASSWORD&value=0&request=controldevicebyvalue&ref=xxx`

Please note that you need to change the ref=xxx to the ref id of your virtual device. In my case it is "ref=1506 " (see page 1).

